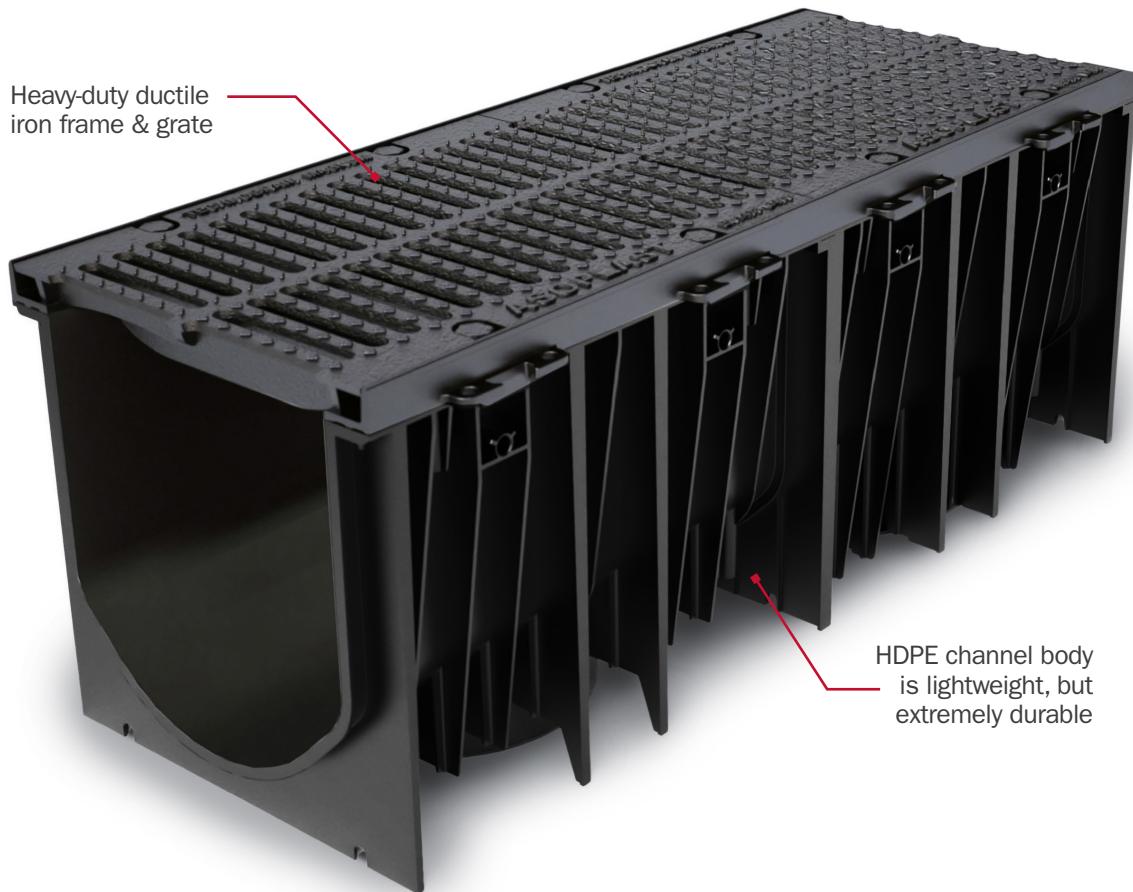


# Fast Track™

Large-Capacity Trench Drain System



Heavy-duty ductile iron frame & grate

HDPE channel body is lightweight, but extremely durable

## Large Capacity

Suitable for large catchment areas or areas with higher expected inflow rates.

## Versatile

Tough, lightweight, HDPE channels interlock easily with no hardware needed.

Ductile iron frame/grate for heavy-duty traffic applications. Integral bottom outlets



Rigid channels with interlocking joints and structural ribs help keep runs straight

Supply

Drainage

Support

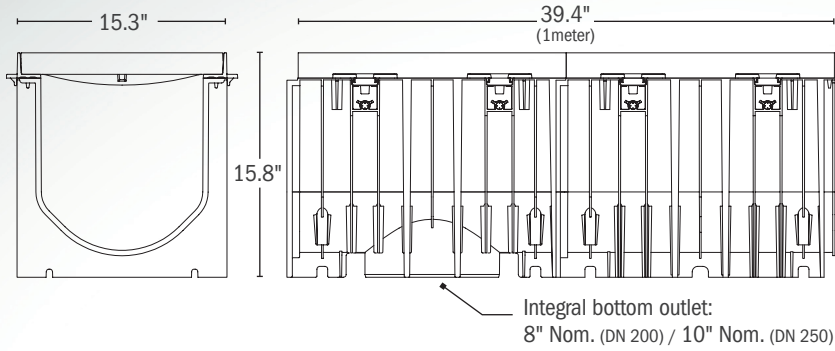
Specialties

[www.siouxchief.com](http://www.siouxchief.com)

TAKE THE FIELD.



# Dimensions



# System Notes

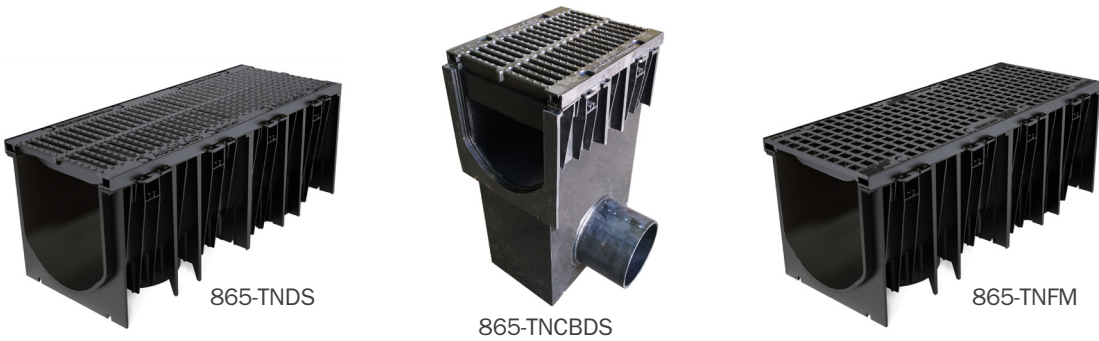
- The FastTrack system is designed for on-grade installations only
- Always install expansion joints on both sides of, and parallel to the channel, per specifications
- FastTrack systems require full concrete encasement on three sides, regardless of surface material/finish
- Slab should be sloped toward the channel on both sides to promote proper drainage
- Grate level should be set ~3/16" below finished slab level



Lightweight, one-meter channel sections are relatively easy to handle, move, and set in place. Ductile iron frame/grate makes the system suitable for heavy-duty applications.



Grate frames include side anchor tabs. Tabs lock frames into the surrounding slab and work with 3/8" rebar to prevent movement before and during the slab pour.



## Buying Information

ITEM NO.	DESCRIPTION	MIN. QTY.	CASE QTY.
<b>FastTrack Channel &amp; Grate Units</b>			
865-TNDS	One-meter channel section with integral bottom outlet. Ductile iron frame and Class D slotted grate	1	1
865-TNFM	One-meter channel section with integral bottom outlet. Ductile iron frame and Class F mesh grate	1	1
<b>Accessories</b>			
865-TNCBDS	Half-meter, end-line catch basin with ductile iron frame and Class D slotted grate - 10" Nom. (DIN 250) HDPE pipe outlet	1	1
865-TNCBFM	Half-meter, end-line catch basin with ductile iron frame and Class F mesh grate - 10" Nom. (DIN 250) HDPE pipe outlet	1	1
865-TNB	Removable stainless steel debris basket for catch basin	1	1
865-TEC	End cap for channel or catch basin	1	1
865-TEO	End outlet for channel - 8" Nom. (DIN 200) HDPE pipe outlet	1	1

Grate load class per DIN EN1433

www.siouxchief.com

#LT2-FASTTRACKLC

14940 Thunderbird Road  
 Kansas City, MO 64147  
**P** 1.800.821.3944  
**F** 1.800.758.5950

